



# Voluson S6

*Extraordinary Vision*



UNIQUE DEMANDS.  
TAILORED ANSWERS.

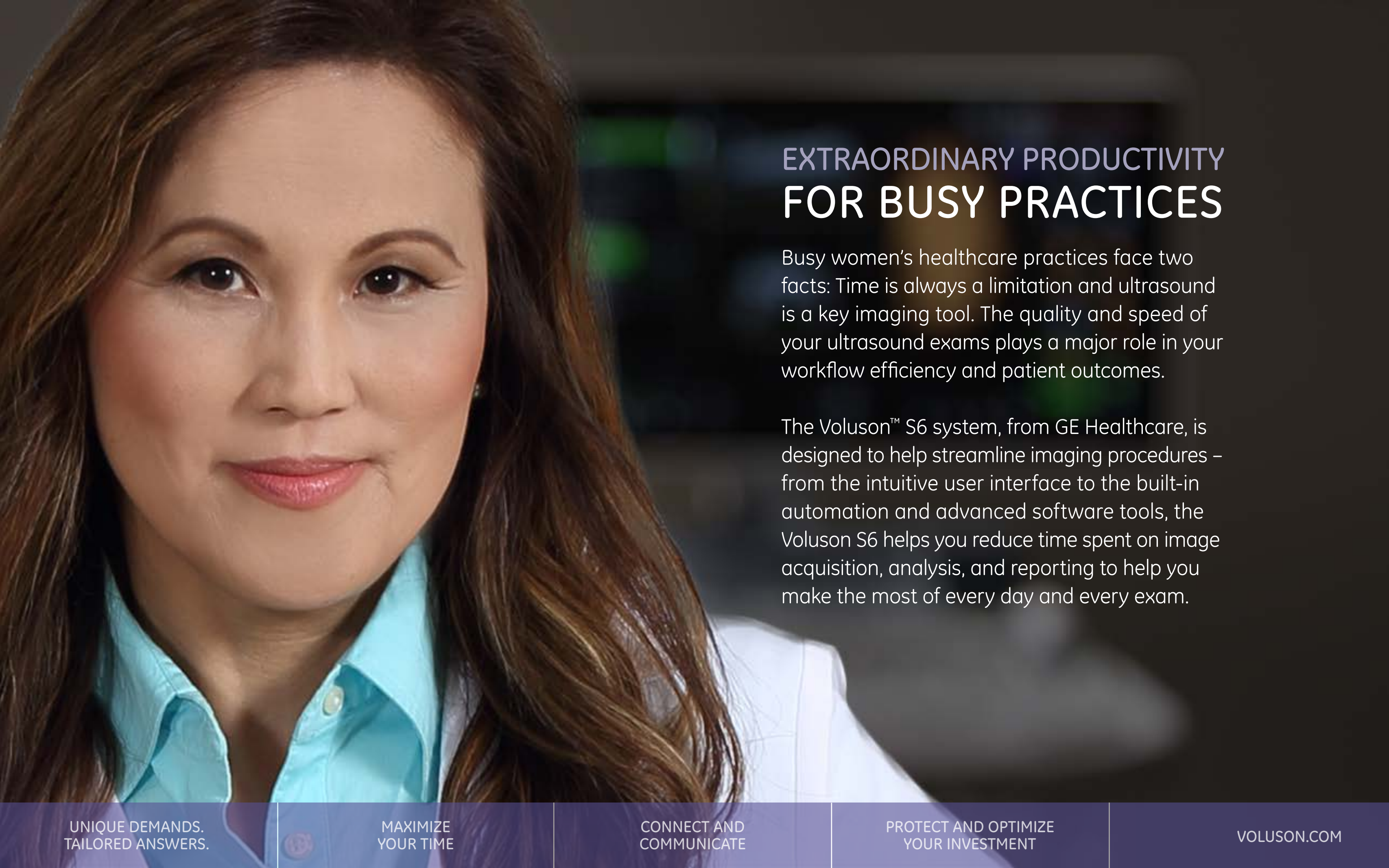
MAXIMIZE  
YOUR TIME

CONNECT AND  
COMMUNICATE

PROTECT AND OPTIMIZE  
YOUR INVESTMENT

VOLUSON.COM





## EXTRAORDINARY PRODUCTIVITY FOR BUSY PRACTICES

Busy women's healthcare practices face two facts: Time is always a limitation and ultrasound is a key imaging tool. The quality and speed of your ultrasound exams plays a major role in your workflow efficiency and patient outcomes.

The Voluson™ S6 system, from GE Healthcare, is designed to help streamline imaging procedures – from the intuitive user interface to the built-in automation and advanced software tools, the Voluson S6 helps you reduce time spent on image acquisition, analysis, and reporting to help you make the most of every day and every exam.

UNIQUE DEMANDS.  
TAILORED ANSWERS.



MAXIMIZE  
YOUR TIME

CONNECT AND  
COMMUNICATE

PROTECT AND OPTIMIZE  
YOUR INVESTMENT

[VOLUSON.COM](http://VOLUSON.COM)



# Unique demands. Tailored answers.

No woman is created equal. From conception to pregnancy, pre-puberty to post-menopause, you require an ultrasound that offers clinical excellence, effortlessly.

Built on the foundational Voluson Core Architecture, the Voluson S6's power comes from a seamless synergy between probes and platform. The result is excellent image quality, quickly, easily – without the need to spend time adjusting the controls.

- Clinical confidence results from superb 2D and 3D image quality optimized for clarity and detail
- Quickly assess vascular anatomy and functions with advanced color Doppler
- Achieve the penetration needed for all exam and body types
- Experience exceptional anatomical realism with HDlive™ technology for 3D and 4D imaging



UNIQUE DEMANDS.  
TAILORED ANSWERS.

MAXIMIZE  
YOUR TIME

CONNECT AND  
COMMUNICATE

PROTECT AND OPTIMIZE  
YOUR INVESTMENT

VOLUSON.COM



Facial details seen with surface rendering





2

Excellent contrast resolution in fetal diaphragm





3

Highly sensitive HD-flow in aortic arch





4

2D ovary with follicles





5

Exceptional realism with HD*live*

UNIQUE DEMANDS.  
TAILORED ANSWERS.

MAXIMIZE  
YOUR TIME

CONNECT AND  
COMMUNICATE

PROTECT AND OPTIMIZE  
YOUR INVESTMENT

VOLUSON.COM





## The right probe for every exam.

Choose from a wide range of advanced, lightweight 2D and 3D probes that deliver outstanding image quality regardless of patient or exam type. Just place the probe and scan.

- C1-5-RS abdominal probe for excellent image quality and penetration even when scanning larger patients
- RAB6-RS ultra-light volume probe that is 40% lighter than the previous version
- RIC5-9A-RS wide band convex volume probe for first trimester and gynecological exams
- IC9-RS endovaginal probe for outstanding 2D gynecology and fetal imaging

The Voluson S6 system provides versatile probes and exceptional imaging performance you need to meet your clinical challenges.

UNIQUE DEMANDS.  
TAILORED ANSWERS.

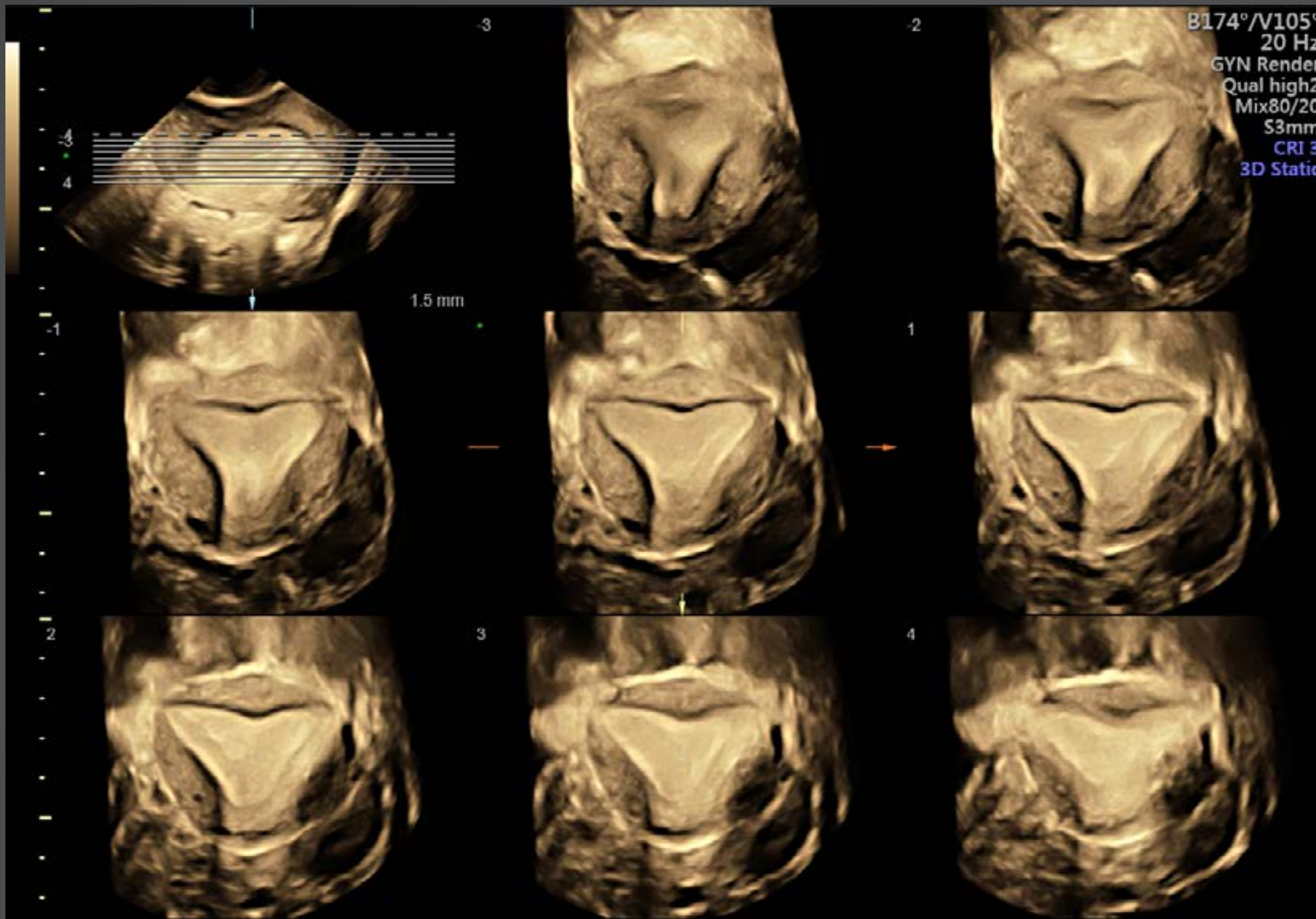
MAXIMIZE  
YOUR TIME

CONNECT AND  
COMMUNICATE

PROTECT AND OPTIMIZE  
YOUR INVESTMENT

VOLUSON.COM





1

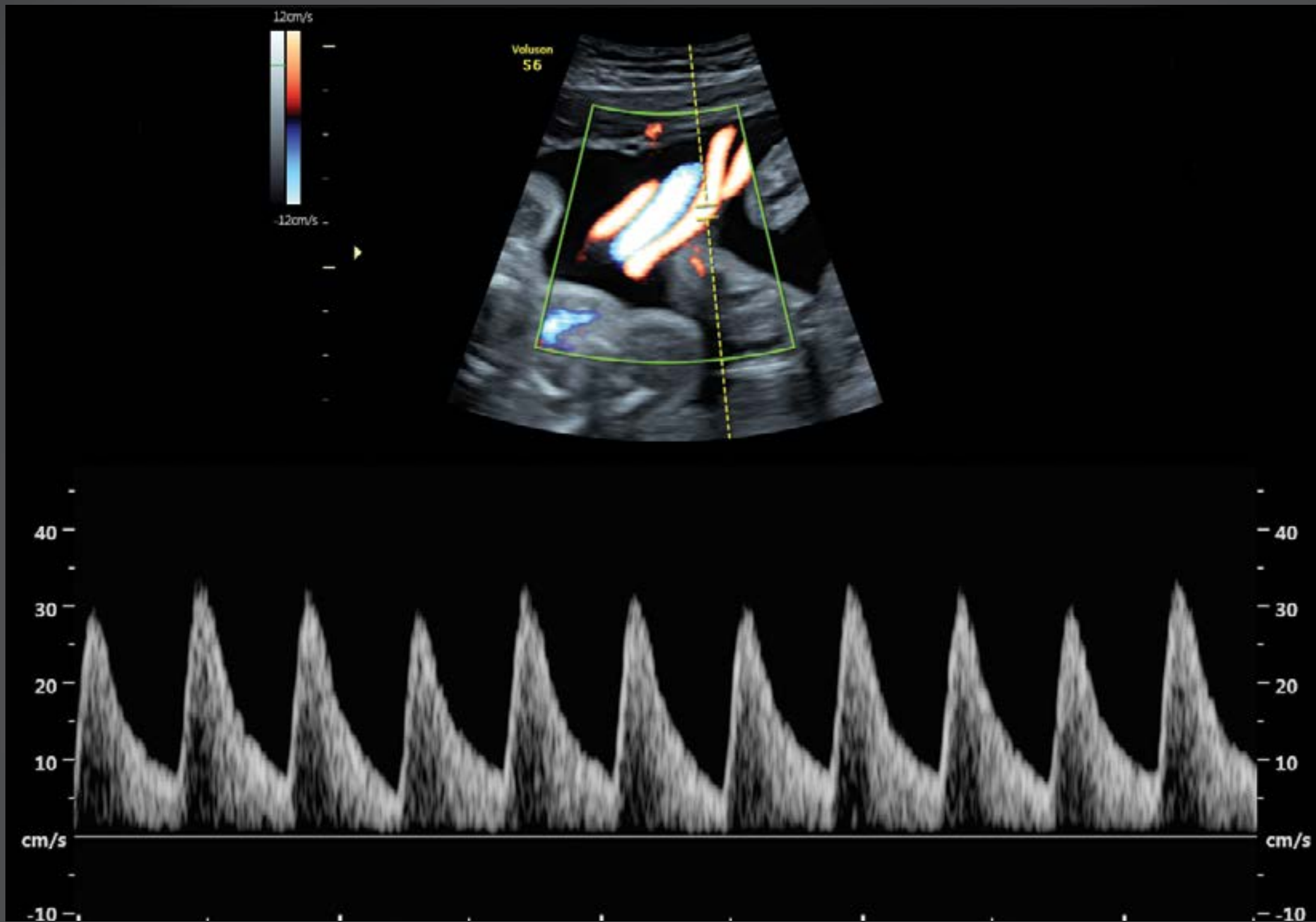
RIC5-9A. Uterine TUI of the coronal plane





2

C1-5. Excellent contrast resolution, ductal arch



3

C1-5. Umbilical cord with Spectral Doppler and HD-Flow





4

RAB6-RS. Fetal profile

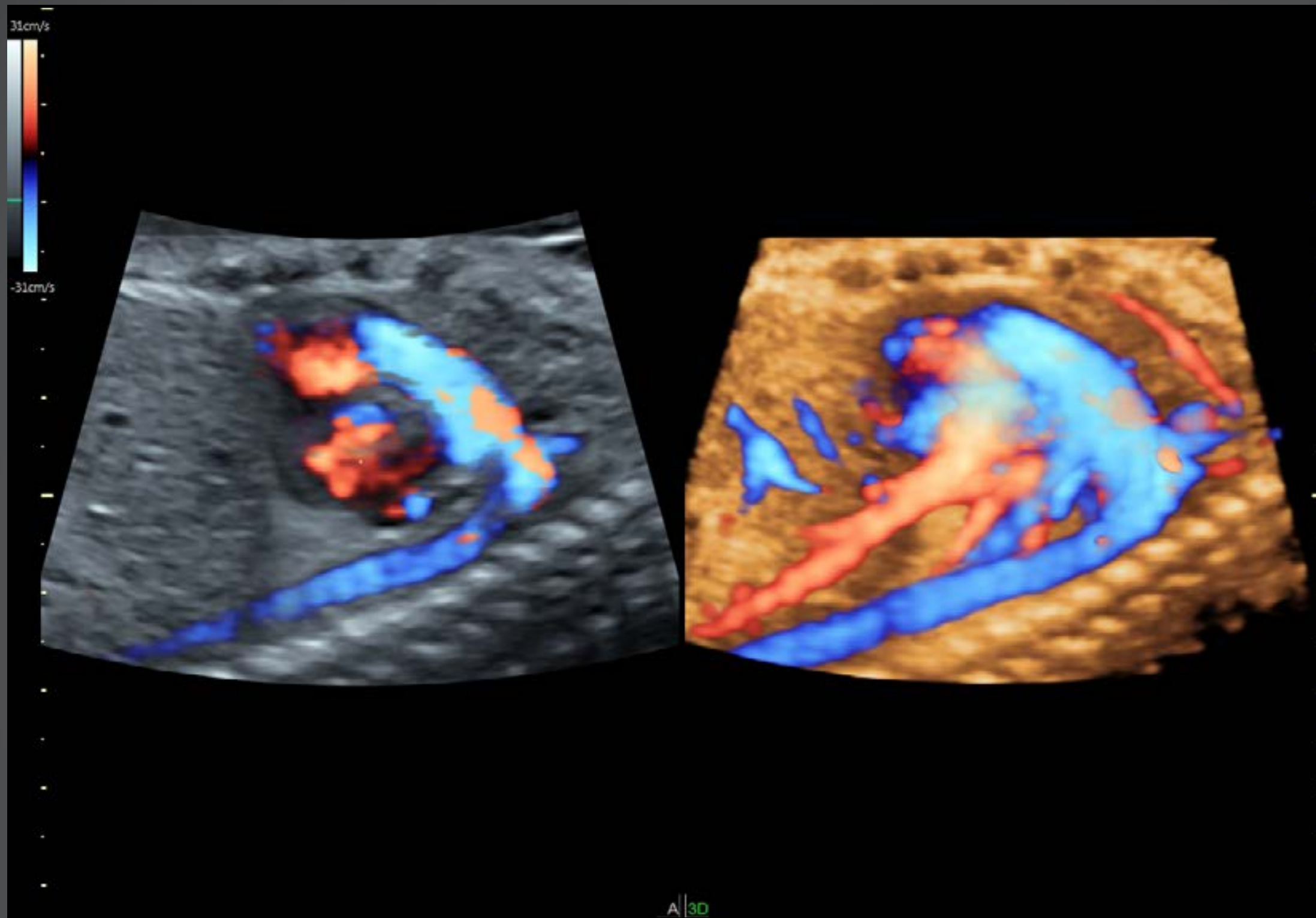
UNIQUE DEMANDS.  
TAILORED ANSWERS.

MAXIMIZE  
YOUR TIME

CONNECT AND  
COMMUNICATE

PROTECT AND OPTIMIZE  
YOUR INVESTMENT

VOLUSON.COM



5

Fetal heart with HD-Flow rendered with STIC-Flow



# Maximize your time

In a busy practice, the pace is unrelenting. The Voluson S6 helps you move through your day with greater efficiency while also enhancing the quality of imaging exams.

Voluson's Automated technologies help reduce keystrokes while enhancing measurement consistency and reproducibility:

- Semi-automated biometry measurements seamlessly fit into your 2D workflow using **SonoBiometry** for BPD, HC, AC, FL and HL
- Standardize measurements of the nuchal and intracranial translucencies in the 1<sup>st</sup> trimester exam by integrating **SonoNT** (Sonography-based Nuchal Translucency) and **SonoIT** (Sonography-based Intracranial Translucency) into your regular workflow
- Simplify 3D/4D acquisitions using **SonoRenderlive** – which automatically adjusts renderline placement during volume acquisition



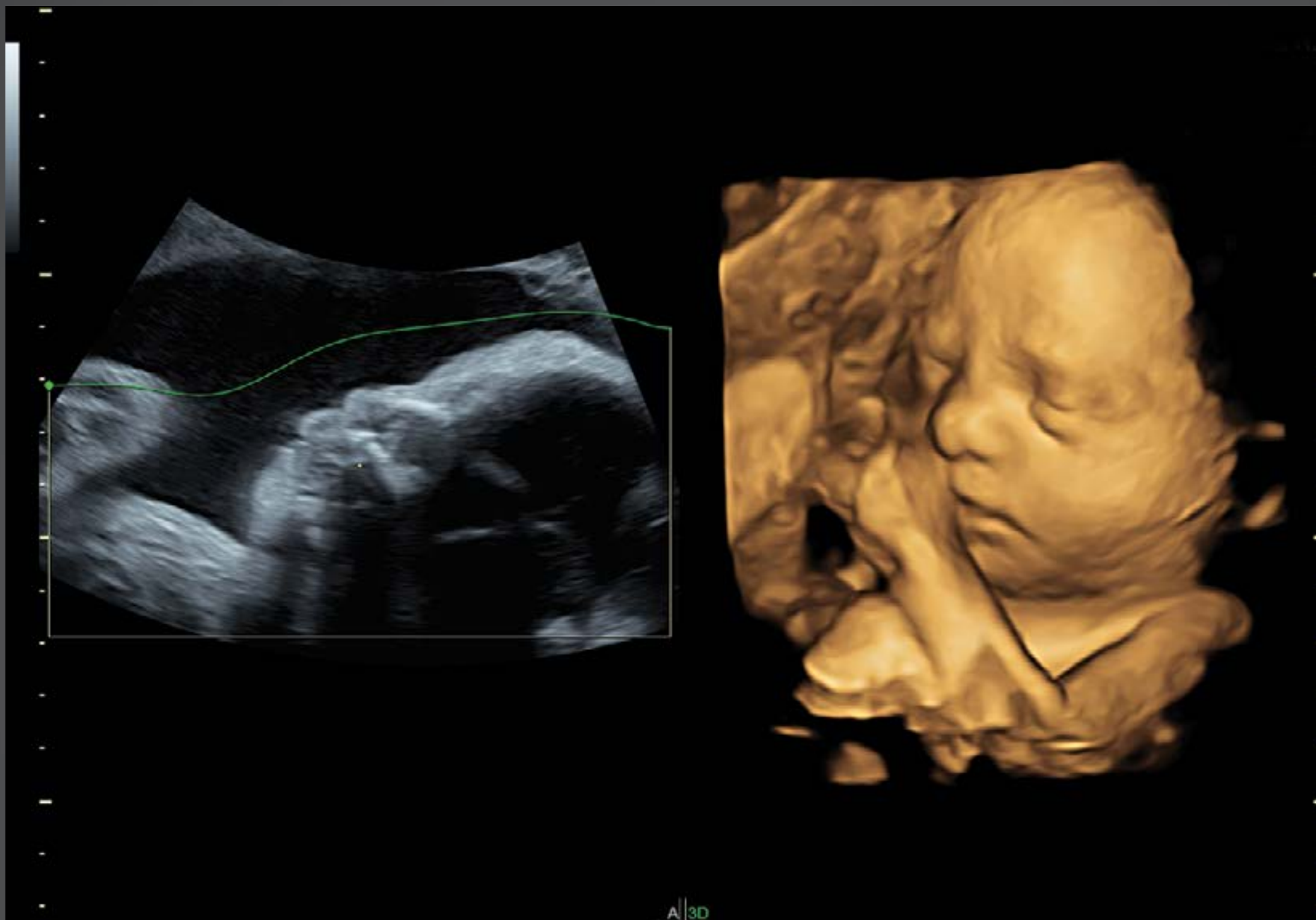
UNIQUE DEMANDS.  
TAILORED ANSWERS.

MAXIMIZE  
YOUR TIME

CONNECT AND  
COMMUNICATE

PROTECT AND OPTIMIZE  
YOUR INVESTMENT

VOLUSON.COM



Semi-automated renderline with SonoRender*live*





2

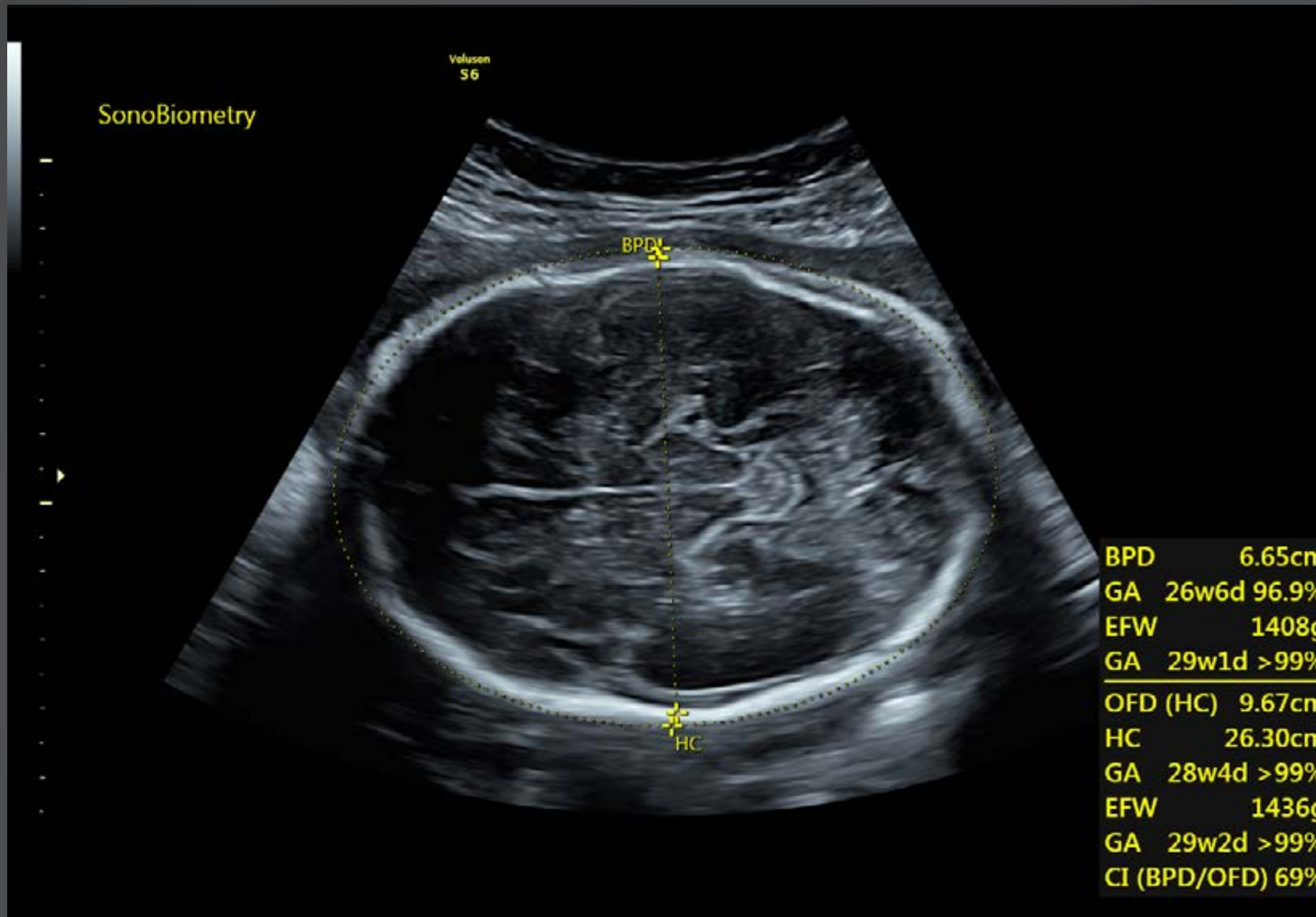
SonoBiometry measurement of abdomen



3

SonoBiometry measurement of humerus





4

SonoBiometry measurements of fetal head

# Advanced ergonomics, for comfort and productivity

The Voluson S6 system is designed for user comfort and efficiency, with features that simplify exams and boost workflow. The simple user interface and ergonomic body style awards fewer keystrokes between you and the answers you seek.

- 23-inch widescreen LED monitor – with customizable layout delivers 85% more image information than our previous Signature Series monitor
- Report preview – provides access to completed measurements and trending at a glance
- Adaptive control panel – swivels side to side, and adjusts to your preferred height to enhance user comfort and ergonomics
- Four active probe ports – reduce exam disruptions with more probes ready to go
- Battery Pack – provides up to 20 minutes of scan time or move from one room to another without experiencing power loss or having to re-boot
- Integrated video and voice recording with DVR/USB streamlines exam recording







UNIQUE DEMANDS.  
TAILORED ANSWERS.

MAXIMIZE  
YOUR TIME

CONNECT AND  
COMMUNICATE

PROTECT AND OPTIMIZE  
YOUR INVESTMENT

[VOLUSON.COM](http://VOLUSON.COM)

# Connect and communicate

## Communicate, archive and report with ease

The Voluson S6 helps you connect more easily with referring physicians, colleagues or patients, and keep up with regulatory requirements. Spend less time on data management and more time with patients.

- Streamlined archiving and reporting – helps you organize and archive patient data efficiently, and stay compliant with growing patient data regulations through DICOM® connectivity and compatibility with many electronic medical record (EMR) systems
- Text or email images to patients directly from the console, for an instant connection that enhances patient satisfaction
- Securely share encrypted images and reports with referring physicians and colleagues via email export from the console

Save time and cost with ViewPoint™ reporting and image management – delivering customizable templates for clearly structured reports, including images, and graphs. Go paperless with digital measurement transfer, image management, and record storage.





# Protect and optimize your investment



Get the most from your investment in ultrasound by taking advantage of the exceptional support resources beyond the Voluson S6 system, including:

- Probe protection and financing to help meet your budget goals
- Access to system upgrades to stay current with ultrasound capabilities
- Reliable, responsive service to keep your system performing well, day after day, and enhance your reputation for patient service
- Membership in the Voluson Club, our global community where you can connect, share, and learn via educational resources and peer-to-peer best-practice sharing ([www.volusonclub.net](http://www.volusonclub.net))

## Links



Promotional video



## Imagination at work

[www.gehealthcare.com](http://www.gehealthcare.com). Product may not be available in all countries and regions. Contact a GE Healthcare Representative for more information.

Data subject to change.

© 2016 General Electric Company.

GE, the GE Monogram, imagination at work, Voluson, ViewPoint HD-Flow and HD*live* are trademarks of General Electric Company.

DICOM is a registered trademark of National Electric Manufacturers Association (NEMA).

Reproduction in any form is forbidden without prior written permission from GE. Nothing in this material should be used to diagnose or treat any disease or condition. Readers must consult a healthcare professional.

March 2016  
JB37874XXb

UNIQUE DEMANDS.  
TAILORED ANSWERS.

MAXIMIZE  
YOUR TIME

CONNECT AND  
COMMUNICATE

PROTECT AND OPTIMIZE  
YOUR INVESTMENT

VOLUSON.COM