



The system **Resona 6** is the newly developed, unique result of the merger of leading companies **Mindray Bio-medical Electronics Co. Ltd.** and **ZONARE Medical Systems, Inc.**. By additions to the core competencies the premium system, Resona 6, represents a sophisticated unit that will impress the world of ultrasound sustainably.

A vision becomes reality.

Resona 6 | 



Visit the system website: www.resona7.com

mindray
healthcare within reach

Resona 6

Premium Ultrasound System

New Waves in Ultrasound Innovation



OB/GYN



Mindray Building, Keji 12th Road South,
High-tech Industrial Park, Nanshan, Shenzhen 518057, P.R. China
Tel: +49 6251 175 240 Fax: +49 6251 175 24 20

E-mail: marketingeu@mindray.com www.mindray.com

mindray | healthcare within reach are registered trademarks or trademarks owned by Shenzhen Mindray Bio-medical Electronics Co., LTD.
©2017 Shenzhen Mindray Bio-Medical Electronics Co., Ltd. All rights reserved.
Specifications subject to changes without prior notice.
P/N:ENG-Resona7-210285x16P-20151009

mindray

Powered by **ZST+**



New Waves in Ultrasound Innovation

Since the company was founded, Mindray is continuously exploring new ways to improve diagnostic confidence. Powered by the most revolutionary ZONE Sonography® Technology, Resona 6's new ZST+ platform brings ultrasound image quality to a higher level by zone acquisition and channel data processing.

As well as ZST+ powered premium image quality, Resona 6 also provides essential clinical features with proven performance, most intelligent fetal CNS plane acquisition and most intuitive gesture-based operation. All of these above have built up Resona 6 as the achievable premium solution to address challenges of clinical accuracy and efficient diagnosis in today's demanding and overburden hospital environments.

The Synergy

A new wave of ultrasound

The system **Resona 6** is the newly developed, unique result of the mержence of leading companies **Mindray Bio-medical Electronic Co. Ltd.** and **ZONARE Medical Systems, Inc.**. The proven and convincing advantages of the unprecedented, fundamentally new **ZONARE Zone Sonography® Technology (ZST)**, coupled with Mindray's 20 years of experiences in technology, performance, knowledge collection and quality assurance on global level and premium standard is the reason to look ahead to a prosperous future.

A vision becomes reality.



Ergonomic Design

Ensuring a better user experience

The **Resona 6** is designed around you. Gesture-based operation opens up a new trend in cart-based ultrasound with an agile, smart, and intuitive user experience beyond your expectations. Resona 6 allows professionals to do more much faster, putting patient care first through better user experience driven by inspired innovations.



- LED high resolution monitor
- 12.1" tilting multi-gesture touch screen
- 3 level temperature adjustable gel warmer
- Flexible and user-friendly control panel
- Pinless transducer with light indicator
- Separate pedals for swivel and rolling lock



Resona 6

Zone Sonography® Technology Plus

Besides the userfriendly ergonomical features, the Mindray difference to all other competitors is the unique, innovative, software based next generation technology ZST+ Platform. The outdated line-by-line technology of conventional ultrasound systems is slow and inefficient with suboptimal imaging quality that's limited by hardware components. Mindrays unique patented Zone Sonography Technology Plus™ (ZST+) is the future industrial estate in ultrasound imaging, since it overcomes many limitations of traditional, digital Beamformer process.

The Core Benefits of the Zone Sonography Plus (ZST+) Platform are:



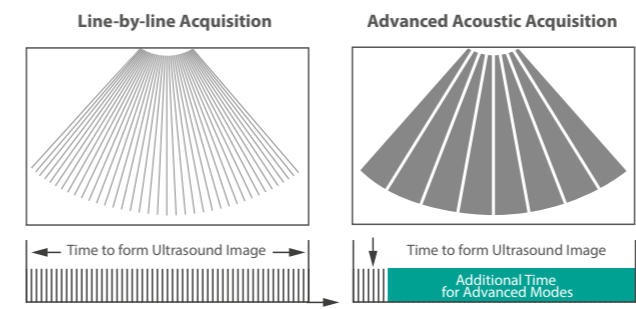
- 1 • **Software based image former**
 - Modular Ultrasound, fast start of system, easy and flexible updates

- 2 • **Zone Acquisition in 1/10 of time compared to conventional beamformers**
 - Reduction of motion artefacts, improved temporal resolution, high contrast resolution
 - No physical focus to adjust

- 3 • **Calibration on Patient by Sound Speed Compensation**
 - Improved contrast and lateral resolution
 - Excellent image uniformity

Key Advantages of ZONE Sonography Technology Plus (ZST+)

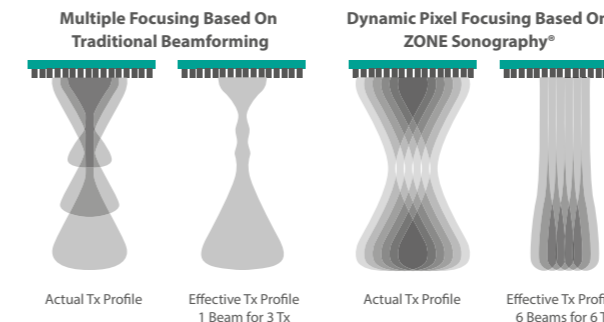
Transforming ultrasound metrics from conventional beamforming to channel data based processing, ZST+ is able to deliver multiple imaging advances: **Advanced Acoustic Acquisition, Dynamic Pixel Focusing, Sound Speed Compensation, Advanced Image Processing and Total Recall Imaging.**



Advanced Acoustic Acquisition

Acquisition and software processing of large ZONES of acoustic data

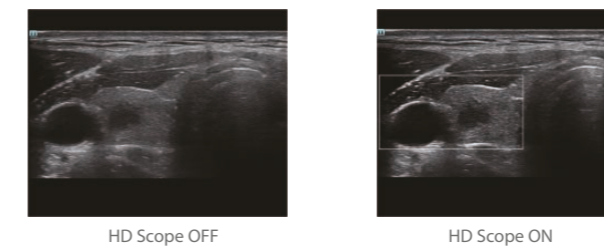
- 10 times faster than conventional line-by-line beamforming methods.
- Acquires and keeps 90% more data
- Improved diagnostic confidence with fast, exceptional temporal display
- Reduces motion artifacts
- Ensures consistent stellar image quality with in simultaneous triplex modes



Dynamic Pixel Focusing

Individual frames are created with pixel-by-pixel focusing at each point on both transmit and receive rendering an ultrasound image that is optimally focused in every frame, at every depth and every time.

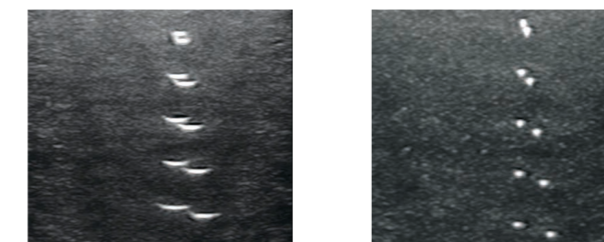
- Exquisite spatial resolution and image uniformity
- Assures a faster and more precise diagnostic process across all clinical applications
- Achieve extreme uniformity in pixel level
- Ensures consistent stellar image quality with in simultaneous triplex modes



Advanced Image Processing

Channel data based ZST+ provides Advanced Image Processing for greatly improved imaging clarity.

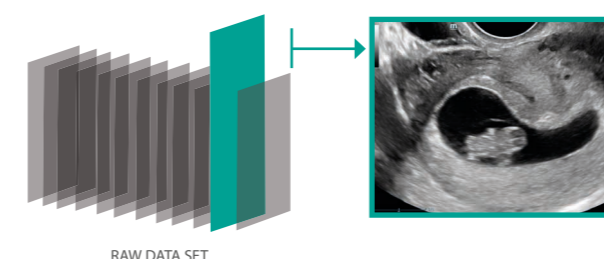
- By multiple and retrospective channel data processing, it makes the best use of acoustic information for image improvement.
- **HD Scope:** higher definition image within ROI.
 - **Coherent Spatial Synthesis:** further improved image quality.



Sound Speed Compensation

With One Touch the system automatically matches tissue with the correct speed of sound

- Choose the optimal sound speed to improve image accuracy
- Patient specific imaging = better diagnostics
- Time saver



Total Recall Imaging

As ZST+ captures and stores the complete acoustic raw data set, Total Recall Imaging (TRI) allows the user to retrospectively modify numerous imaging parameters and optimize clinical information

- It eliminates the need for repeat scanning
- Improves patient throughput



It leads.

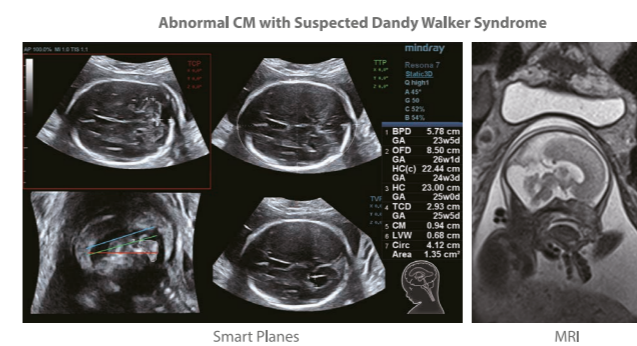
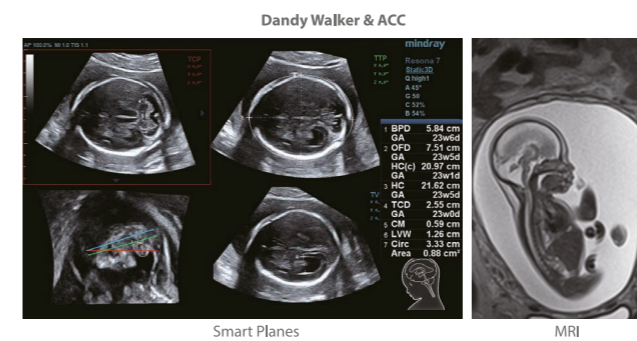
Forwarding smart to clinical intelligence

The Resona 6 elevates clinical intelligence to a new level with a complete solution that enables clinicians to manage both routine and advanced studies more efficiently, consistently, and accurately, from acquisition to calculation. As an example, Smart Planes shows exceptional intelligence in accurate diagnosis and analysis of fetal central nervous system (CNS).

Smart Planes

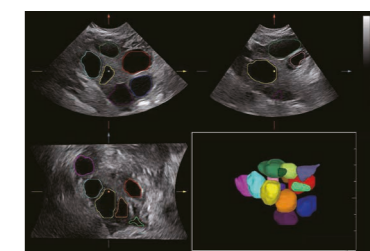
Mindray's exclusive pioneering technology positions the Resona 6 as the industry's first ultrasound system to allow fully automatic and accurate detection of the most significant planes and frequently used measurements of fetal CNS, leading to intelligent diagnosis, improved throughput, and reduced user dependency.

Smart Planes provides a user-friendly tool that greatly improves scanning efficiency through increased accuracy coupled with automated operation. With a simple button click on a 3D fetal brain volume image, the standard CNS scanning planes (MSP, TCP, TTP and TVP) and a range of related anatomical measurements (BPD, HC, OFD, TCD, CM and LVW) are obtained immediately.



Smart FLC

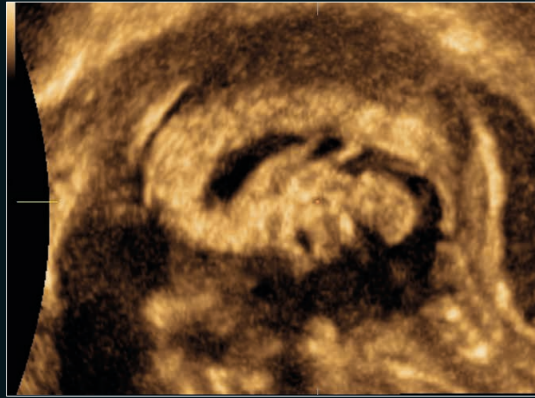
Smart FLC automatically detects the number of follicles and calculates each volume from a 3D ovarian volume image, assuring accurate assessment of follicles, especially with IVF exams.



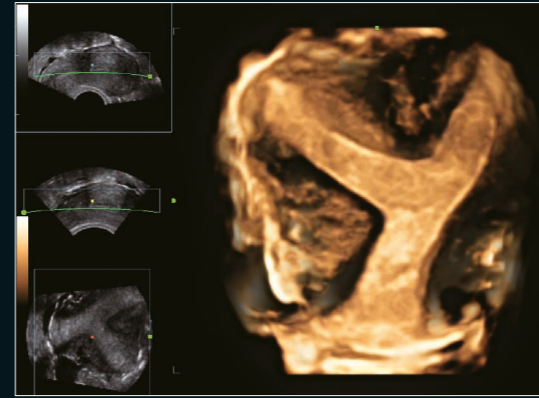
Smart OB/NT

Automatic measurements of the most frequently examined parameters, including BPD, HC, FL, AC, OFD and even NT as early as 11 weeks, are available with a single click for higher productivity and reproducibility.

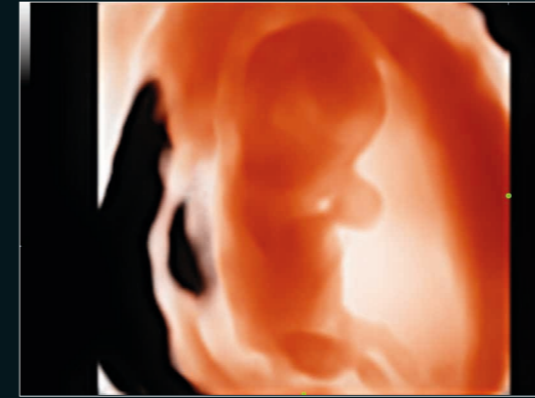




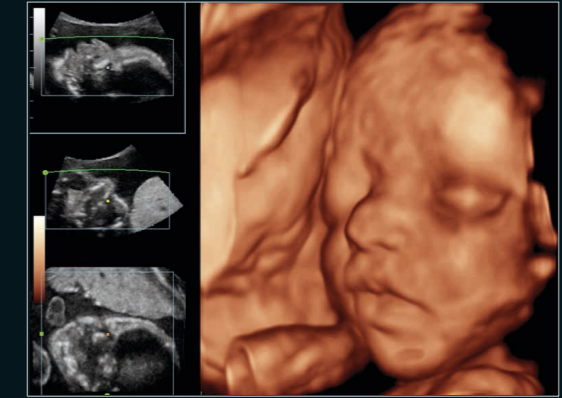
MSP



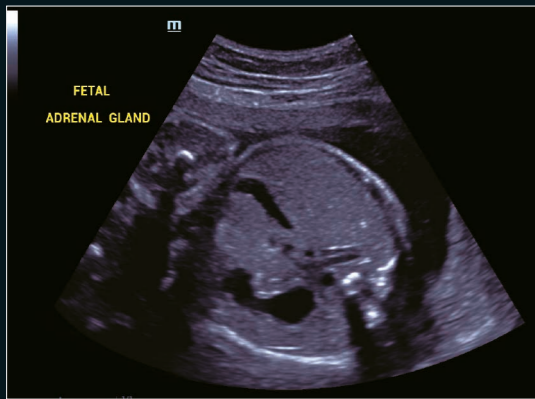
3D of Bicornuate uterine anomaly



Fetal 3D live



3D Fetal Face



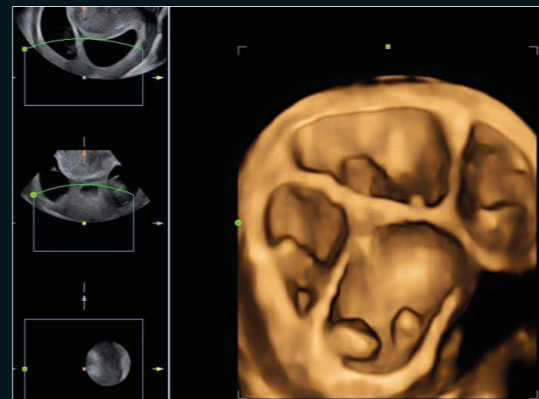
Fetal Adrenal Gland



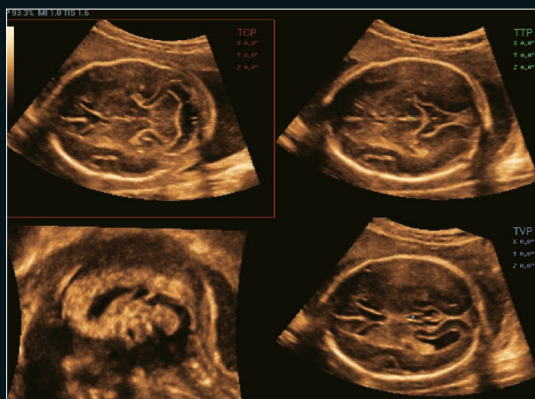
3D of Fetal Profile



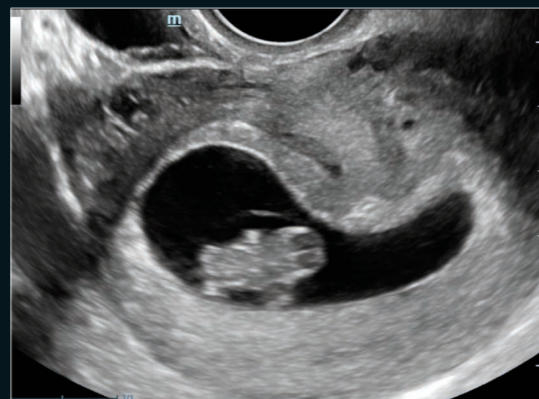
3D Fetal Spine



Quadruplets



Smart Planes



Early Ob

It releases A new standard of image clarity

Better vision, deeper understanding. Based on the cutting-edge ZST+ platform, Resona 6 redefines a new standard of image performance to meet the needs of the most challenging clinical practices.

